

**BUILDING PLOT, GREAT BARTON, BURY ST.
EDMUNDS, SUFFOLK. IP31 2RJ**



Great Barton is a popular village with a post office, preschool, primary school, public house, active village hall and church. A more comprehensive range of facilities are available at the Cathedral town of Bury St Edmunds. The A143 runs through the village providing easy access to the A14. There is a commuter rail link service to London Liverpool Street Station at Stowmarket and a branch line service at Thurston (3 miles).

This is a rare opportunity to secure a generous building plot within one of the areas most favoured villages. The site measures about 0.3 of an acre and has planning permission to erect a spacious 4-bedroom detached house and double garage of about 340sq.m.

A building plot within a well-regarded Suffolk village.

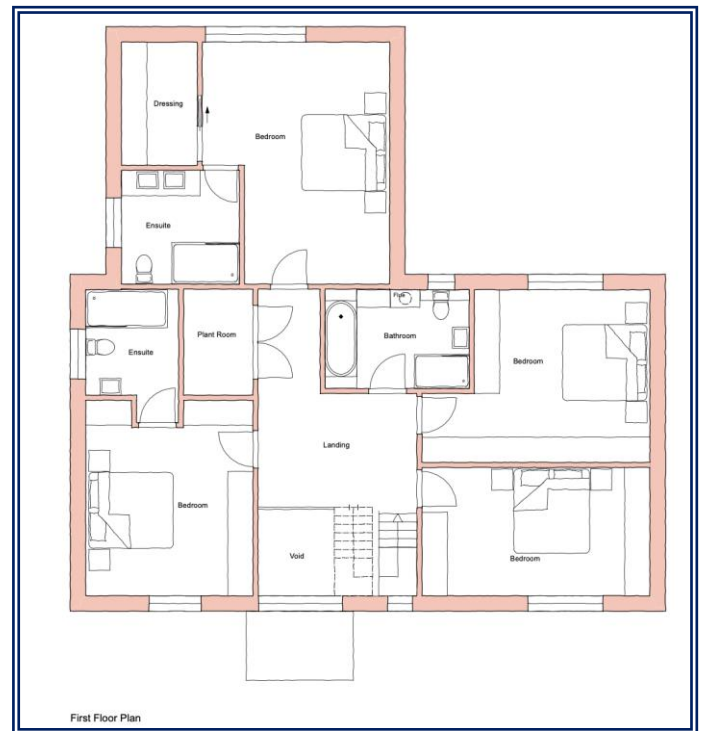
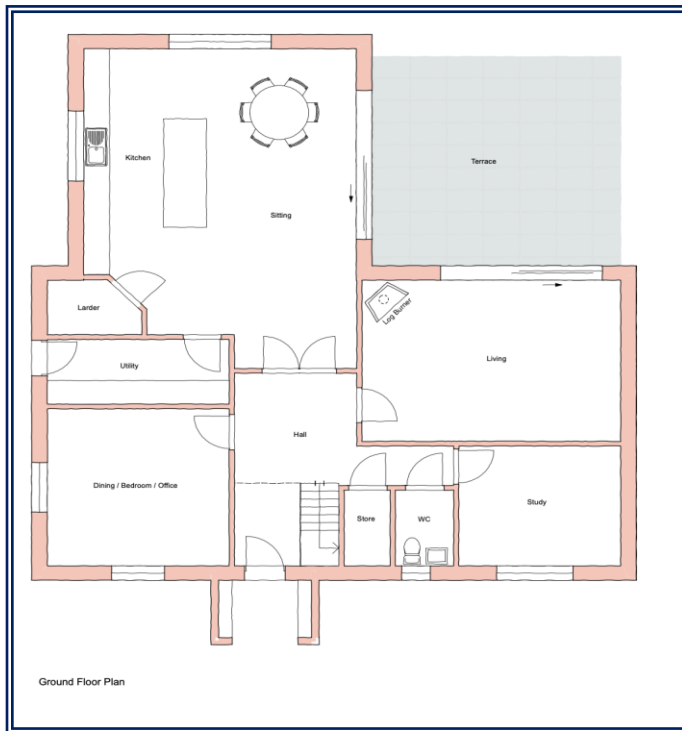
Guide £350,000.00.

BURY ST. EDMUNDS 01284 725525

*Long Melford Castle Hedingham Clare Leavenheath Newmarket Woolpit London SW1
www.davidburr.co.uk*

BUILDING PLOT, GREAT BARTON, BURY ST. EDMUNDS, SUFFOLK. IP31 2RJ

Proposed Floor Plans



For further information please visit the West Suffolk Council website planning portal www.westsuffolk.gov.uk and search reference: DC/23/1636/RM.

VIEWINGS: Please contact David Burr Bury St Edmunds on 01284 725525 prior to making a site visit.

SERVICES: We understand mains water, drainage and electricity are on site although need to be connected.